

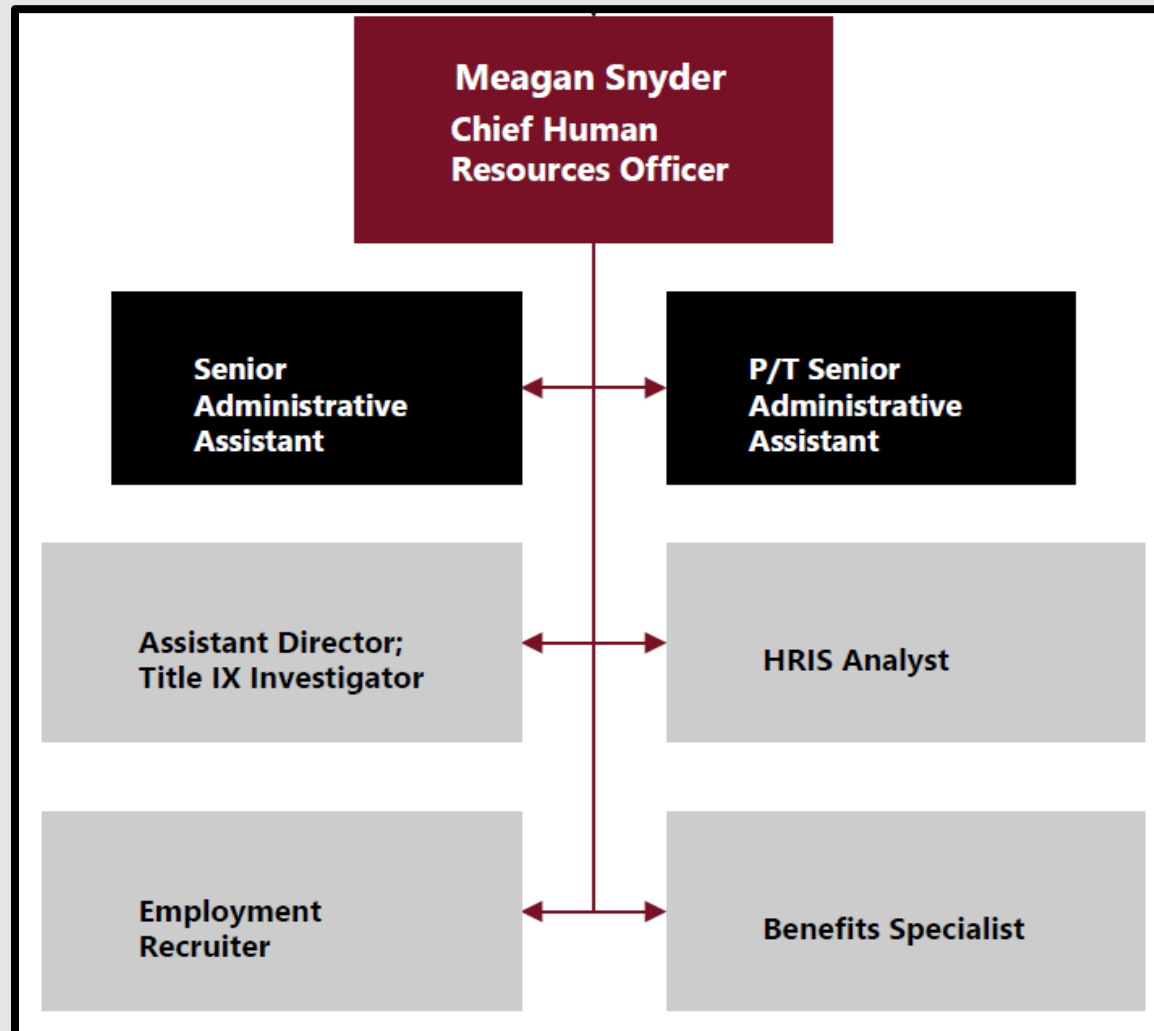


Human Resources

North Idaho College

► ***nic.edu***

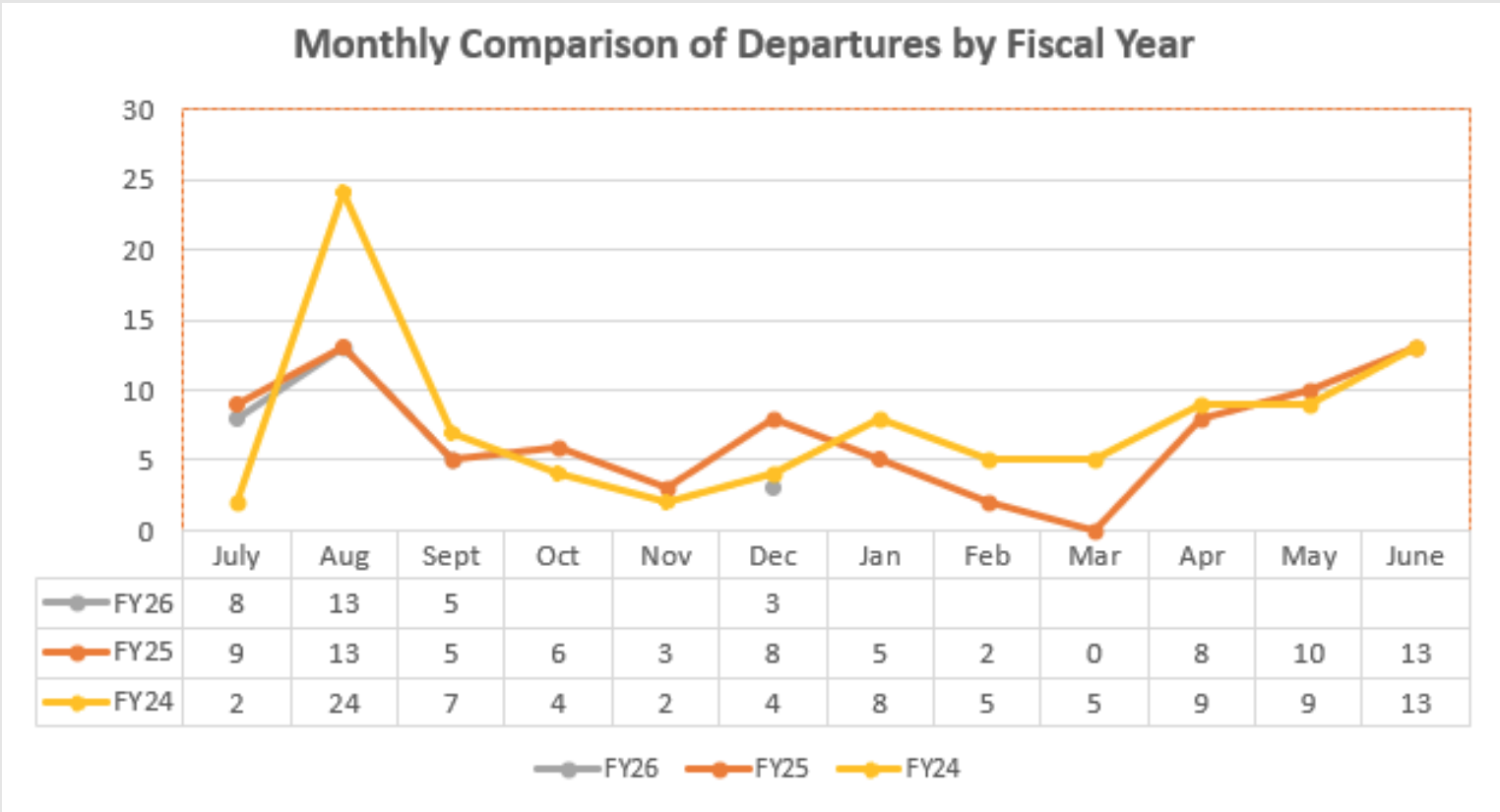
HR Team



HR provides professional assistance to recruit, retain, and engage our most valuable asset - our employees. We are dedicated to clear communication, progressive thinking, and resourceful solutions in support of the mission of NIC.

Monthly Departure Comparison - FY24, FY25 & FY26

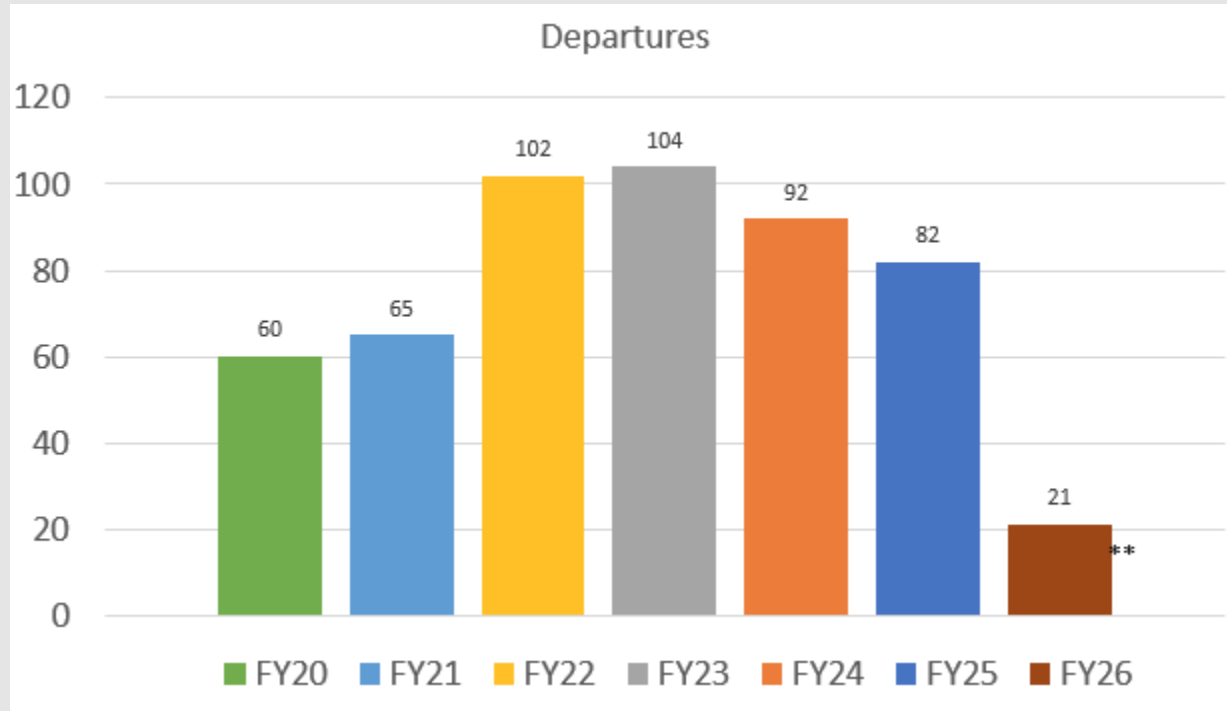
Includes voluntary (resignations, retirements) and involuntary terminations



- FY26 departures through August 2025

Departure History FY19-FY25

Includes voluntary (resignations, retirements) and involuntary terminations



YTD Total Comparison

FY26	21
FY25	22
FY24	26

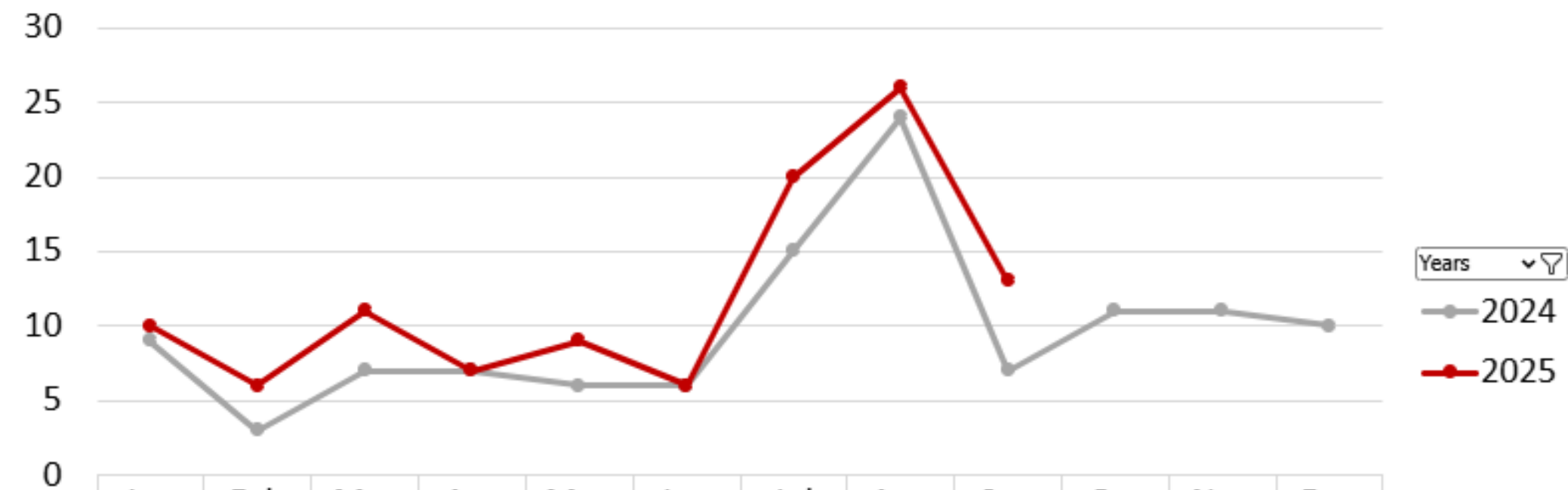
**FY26 departures through August

Employee Counts

Position Type	Employee Count
FT Faculty	132
FT Staff	365
All FT benefits eligible	497
Adjunct	143
Part-time staff	277
Students/Workstudy	114
All PT	534
Total	1031

New Hire Count

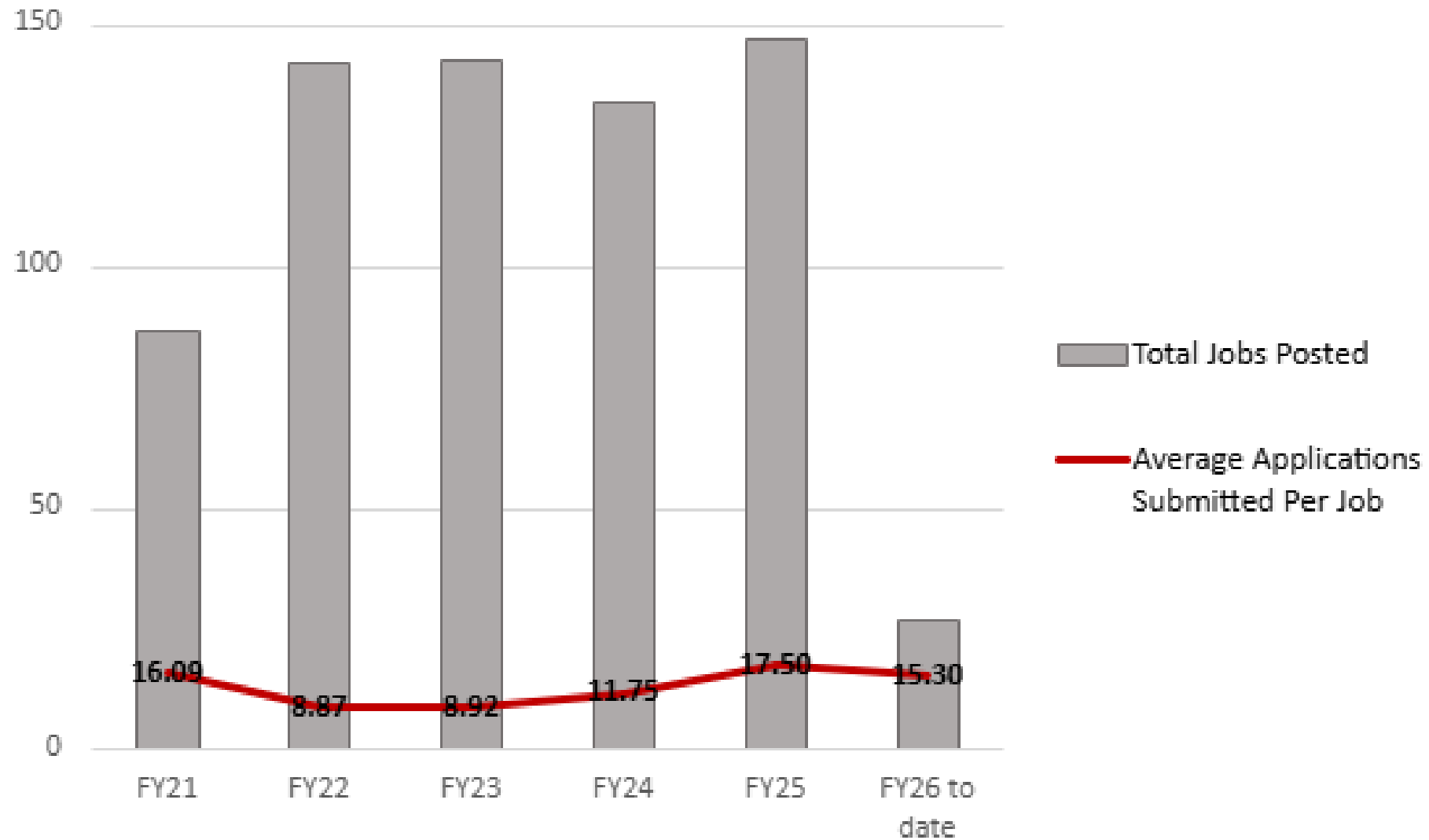
New Hires



	Jan	Feb	Mar	Apr	May	Jun	Jul	Aug	Sep	Oct	Nov	Dec
2024	9	3	7	7	6	6	15	24	7	11	11	10
2025	10	6	11	7	9	6	20	26	13			

Month ▾

Application Metrics



Critical Positions Filled

**Director
Network
Systems**

**Director
Applications
Enterprise**

**Associate
Dean of
Nursing**

**Dean of
Nursing &
Health
Professions**

**15 Fall Start
Faculty
Positions**

