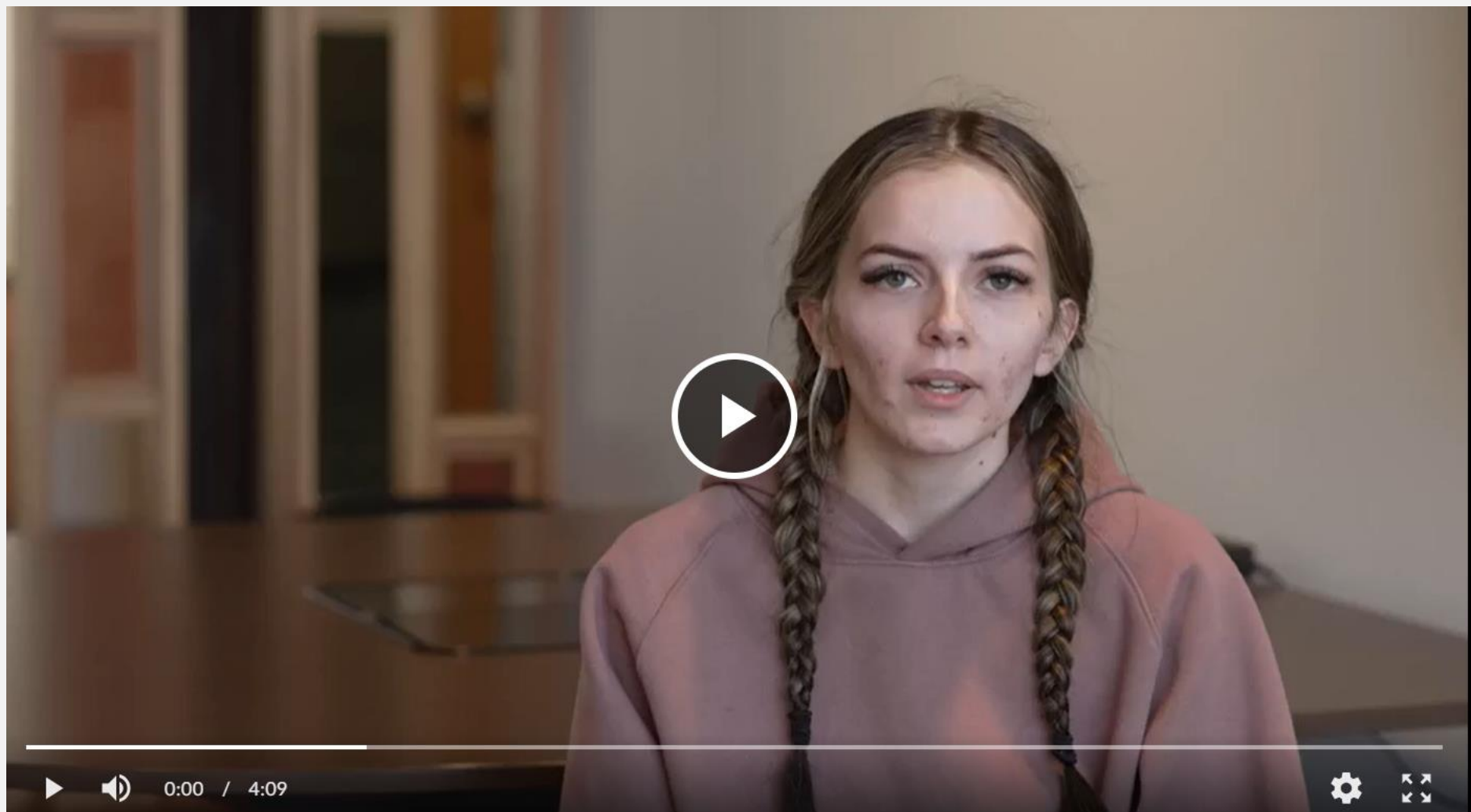


Retention Initiatives

First Year Experience

- NIC's most comprehensive retention initiative
- Two classes to cover the full first year
- FYE is a cohort program
- Faculty and staff from across campus participate





Significant Gains for FYE Participants

Retention	2022FA New Cohort	Retained in 2023SP	Retained in 2023FA	Retained in 2024SP
FYE Cohort	195	87.2%	54.1%	37.5%
FYE Eligible Cohort (Excludes FYE Cohort)	305	68.9%	47.3%	36.6%

Retention	2023FA New Cohort	Retained in 2024SP	Retained in 2024FA	Retained in 2025SP
FYE Cohort	164	78.4%	55.3%	47.4%
FYE Eligible Cohort (Excludes FYE Cohort)	305	69.8%	48.8%	44.6%

Significant Gains for NIC!

Retention	2022FA New Cohort	Retained in 2023SP	Retained in 2023FA	Retained in 2024SP
FYE Cohort	195	87.2%	54.1%	37.5%
FYE Eligible Cohort (Excludes FYE Cohort)	305	68.9%	47.3%	36.6%

Retention	2023FA New Cohort	Retained in 2024SP	Retained in 2024FA	Retained in 2025SP
FYE Cohort	164	78.4%	55.3%	47.4%
FYE Eligible Cohort (Excludes FYE Cohort)	305	69.8%	48.8%	44.6%

8%

On Track for Continued Gains

Retention	2024FA New Cohort	Retained in 2025SP	Retained in 2025FA
FYE Cohort	201	78.6%	59.0%
FYE Eligible Cohort (Excludes FYE Cohort)	350	73.4%	51.6%

Continuing Efforts

- Scaling FYE
- Retention Committee
- Infusing Relationship Rich Education Across Campus